



GCKR Polyclonal Antibody

Catalog No	YP-Ab-03891
Isotype	IgG
Reactivity	Human;Mouse;Rat
Applications	WB;ELISA
Gene Name	GCKR
Protein Name	Glucokinase regulatory protein
Immunogen	The antiserum was produced against synthesized peptide derived from human Glucokinase Regulator. AA range:211-260
Specificity	GCKR Polyclonal Antibody detects endogenous levels of GCKR protein.
Formulation	Liquid in PBS containing 50% glycerol, 0.5% BSA and 0.02% sodium azide.
Source	Polyclonal, Rabbit,IgG
Purification	The antibody was affinity-purified from rabbit antiserum by affinity-chromatography using epitope-specific immunogen.
Dilution	Western Blot: 1/500 - 1/2000. ELISA: 1/40000. Not yet tested in other applications.
Concentration	1 mg/ml
Purity	≥90%
Storage Stability	-20°C/1 year
Synonyms	GCKR; Glucokinase regulatory protein; Glucokinase regulator
Observed Band	68kD
Cell Pathway	Cytoplasm . Nucleus . Mitochondrion . Under low glucose concentrations, GCKR associates with GCK and the inactive complex is recruited to the hepatocyte nucleus. .
Tissue Specificity	Found in liver and pancreas. Not detected in muscle, brain, heart, thymus, intestine, uterus, adipose tissue, kidney, adrenal, lung or spleen.
Function	function:Inhibits glucokinase by forming an inactive complex with this enzyme.,similarity:Belongs to the GCKR family.,similarity:Contains 1 SIS domain.,tissue specificity:Found in liver and pancreas. Not detected in muscle, brain, heart, thymus, intestine, uterus, adipose tissue, kidney, adrenal, lung or spleen.,
Background	This gene encodes a protein belonging to the GCKR subfamily of the SIS (Sugar ISomerase) family of proteins. The gene product is a regulatory protein that inhibits glucokinase in liver and pancreatic islet cells by binding non-covalently to form an inactive complex with the enzyme. This gene is considered a susceptibility gene candidate for a form of maturity-onset diabetes of the young (MODY). [provided by RefSeq, Jul 2008],



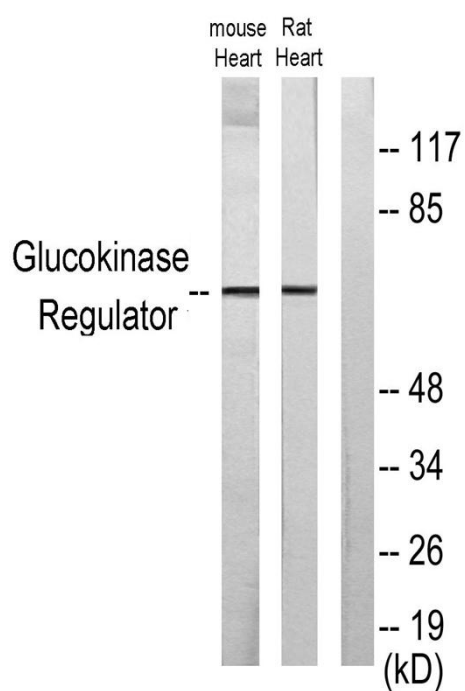
matters needing attention

Avoid repeated freezing and thawing!

Usage suggestions

This product can be used in immunological reaction related experiments. For more information, please consult technical personnel.

Products Images



Western blot analysis of lysates from mouse heart and rat heart cells, using Glucokinase Regulator Antibody. The lane on the right is blocked with the synthesized peptide.